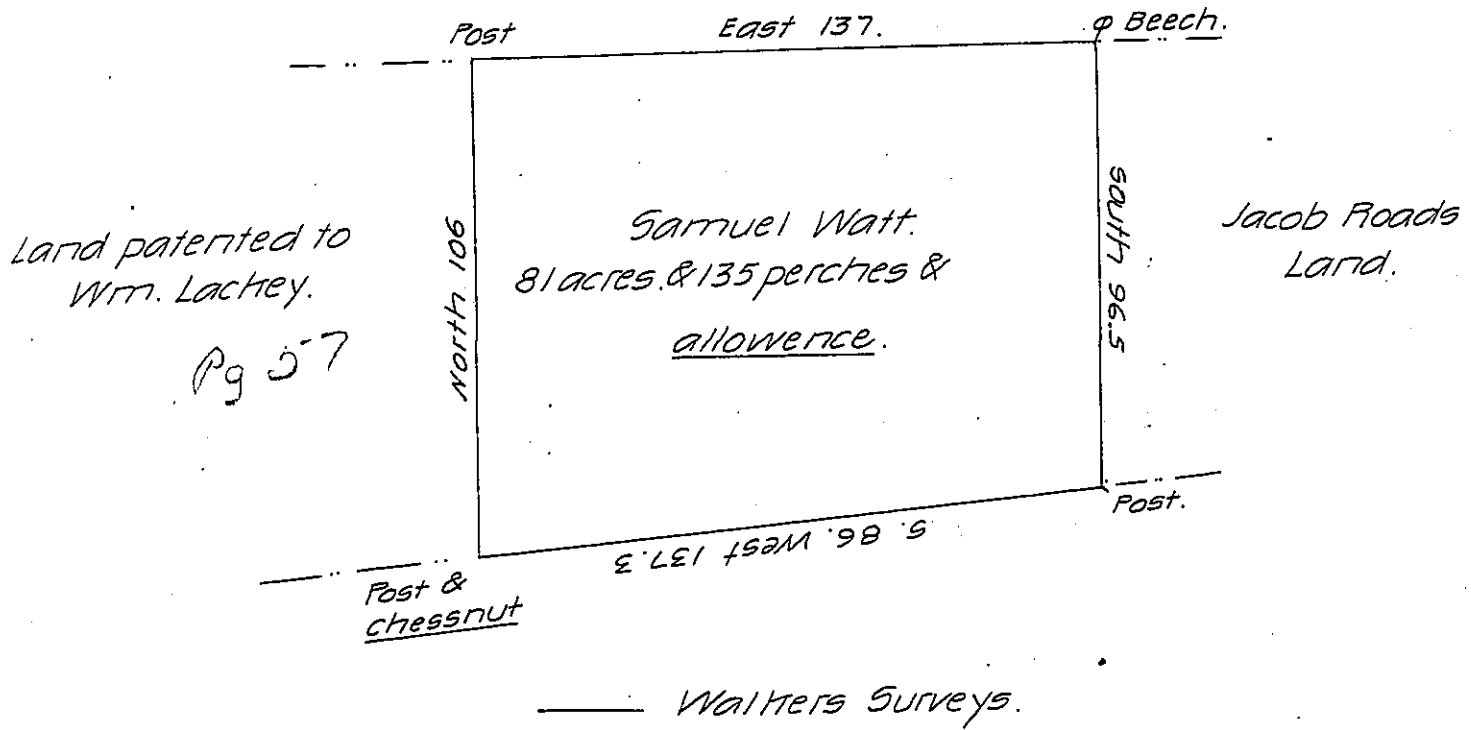


Crawford County Line.



Situate in Salem Township Mercer County on the Waters of She-
nango Containing eighty one acres & one hundred and thirty five perches
& allowance of six per cent for roads & Ca. Surveyed May 1st 1835 in pursu-
ance of a Warrent granted to Samuel Watt dated April 6th 1835.

By me:

John Findley D.S.

To Jacob Spangler Esqr. S.G.

IN TESTIMONY that the above is a copy of the original remaining on file in
the Department of Internal Affairs of Pennsylvania, made
conformably to an Act of Assembly approved the 16th day of
February, 1833, I have hereunto set my Hand and caused
the Seal of said Department to be affixed at Harrisburg,
this twenty-third day of May 1907

Henry Howe
Secretary of Internal Affairs.